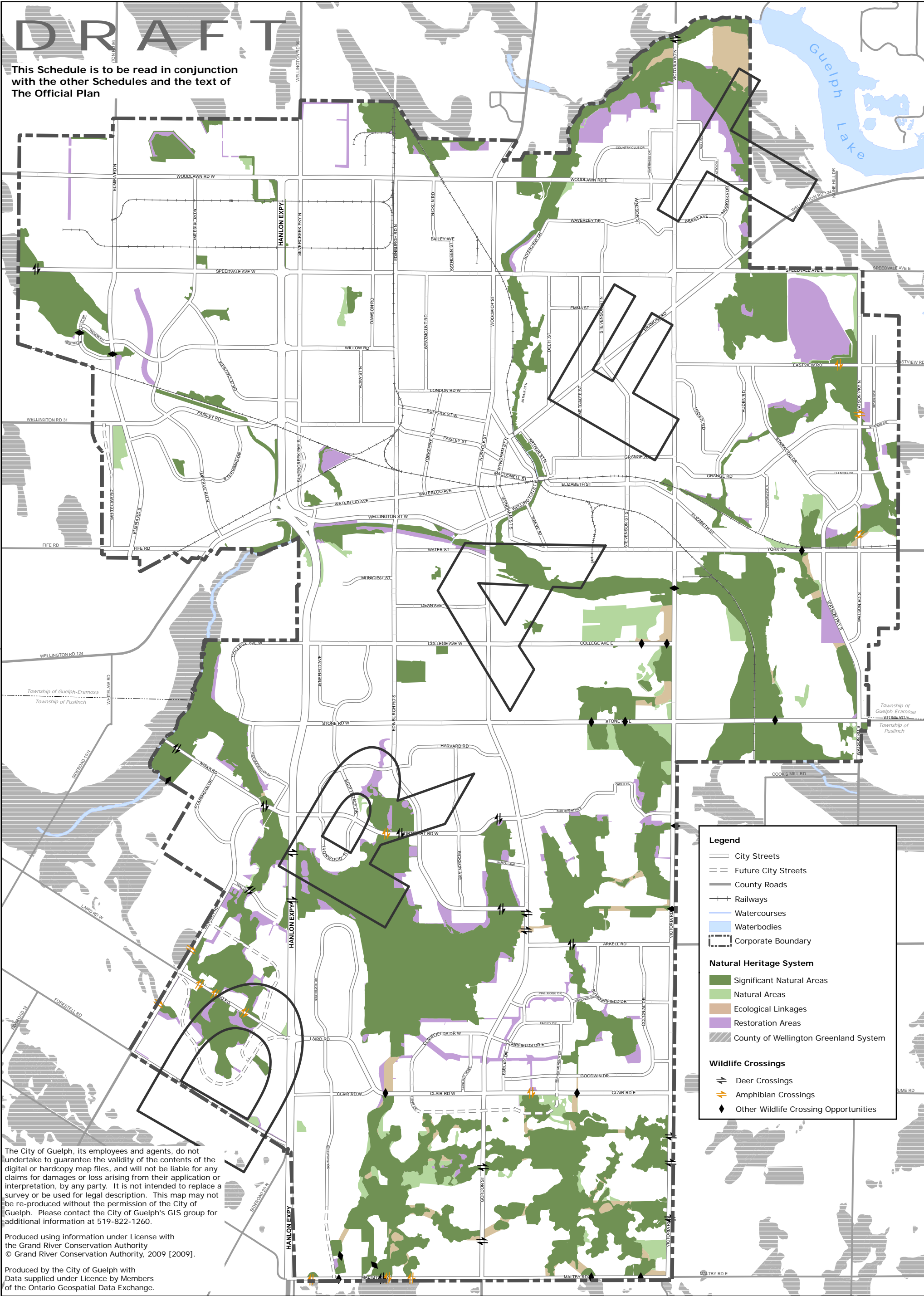


DRAFT

This Schedule is to be read in conjunction with the other Schedules and the text of The Official Plan



Legend

- City Streets
- Future City Streets
- County Roads
- Railways
- Watercourses
- Waterbodies
- Corporate Boundary

Natural Heritage System

- Significant Natural Areas
- Natural Areas
- Ecological Linkages
- Restoration Areas
- County of Wellington Greenland System

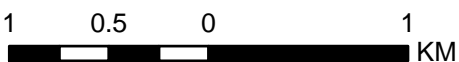
Wildlife Crossings

- Deer Crossings
- Amphibian Crossings
- Other Wildlife Crossing Opportunities

The City of Guelph, its employees and agents, do not undertake to guarantee the validity of the contents of the digital or hardcopy map files, and will not be liable for any claims for damages or loss arising from their application or interpretation, by any party. It is not intended to replace a survey or be used for legal description. This map may not be re-produced without the permission of the City of Guelph. Please contact the City of Guelph's GIS group for additional information at 519-822-1260.

Produced using information under License with the Grand River Conservation Authority
© Grand River Conservation Authority, 2009 [2009].

Produced by the City of Guelph with Data supplied under Licence by Members of the Ontario Geospatial Data Exchange.



CITY OF GUELPH OFFICIAL PLAN DRAFT SCHEDULE 4: NATURAL HERITAGE SYSTEM

